



Fly YPK – Neighbourly Program

'Fly YPK' is a neighbourly flying program developed by the Pitt Meadows Airport Society (PMAS) that brings together airport operators and the surrounding community as we work towards building awareness of aviation practices.



Managing noise levels at airports can be challenging but sharing information we hope to build awareness and continue safe, neighbourly flying practices.

Through this program we aim to help the community understand more about aircraft, flight paths, and normal airport operations.

For pilots, this program provides awareness on how a few basic flying practices may benefit the community.

Airport Info & Community Awareness



The Pitt Meadows Regional Airport embarked in 1961 and was in operation in 1963. Operating 24/7, 365 days of a year acting as a general aviation satellite airport, catering to flight training, aircraft maintenance businesses, and commercial charter operations. There are three runways, multiple taxiways, a water aerodrome, and a control tower which operates daily from 7am to 11pm. The airport is located approximately thirty-two kilometers northeast of Vancouver International Airport and serves Metro Vancouver's Northeast sector.

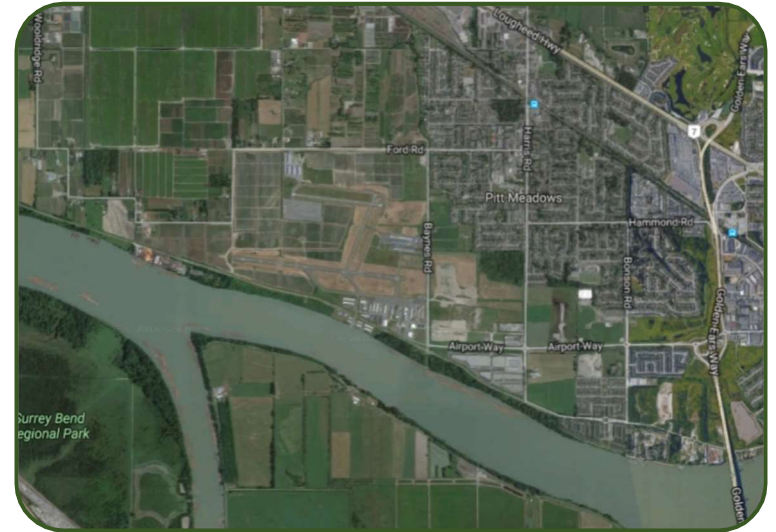
The Pitt Meadows Regional Airport is home to five flight schools and several private general aviation firms. As part of flight school training, pilots are required to perform both day and night flying. Aircraft take-offs and landings are an important part of training.

Aircraft noise caused from day to day airport operations is a reason to work together with the rest of the community.

We continue to inform and communicate with airport tenants and Pitt Meadows residents to better manage the impact the airport has on the surrounding community.

Flying Practices

1. During takeoff, adopt the best rates of climb to minimise the noise impacts over residential areas.
2. When safe, maintain positive rate of climb at reduced power setting when possible.
3. Use low noise speed/descent settings and high takeoff/descent profiles when flying over highly populated areas.
4. Restrict low level training to designated and approved areas.
5. Be sure to comply with all appropriate navigational regulations and procedures.



Adopting the Culture

'Fly YPK' will be distributed to our pilots, tenants, and local community. Safety remains the highest priority at the Pitt Meadows Regional Airport, with the understanding that weather conditions, air traffic procedures and instructions and safe separation distances between aircraft are the highest priorities at all times.

The Pitt Meadows Regional Airport welcomes feedback. More information can be found on our website at www.flyypk.ca/info/noise-information or leave a message on our safety line at 604.465.8977 ext. 9.

Noise concerns for areas not near the airport should be directed to Transport Canada 604-666-4916.