

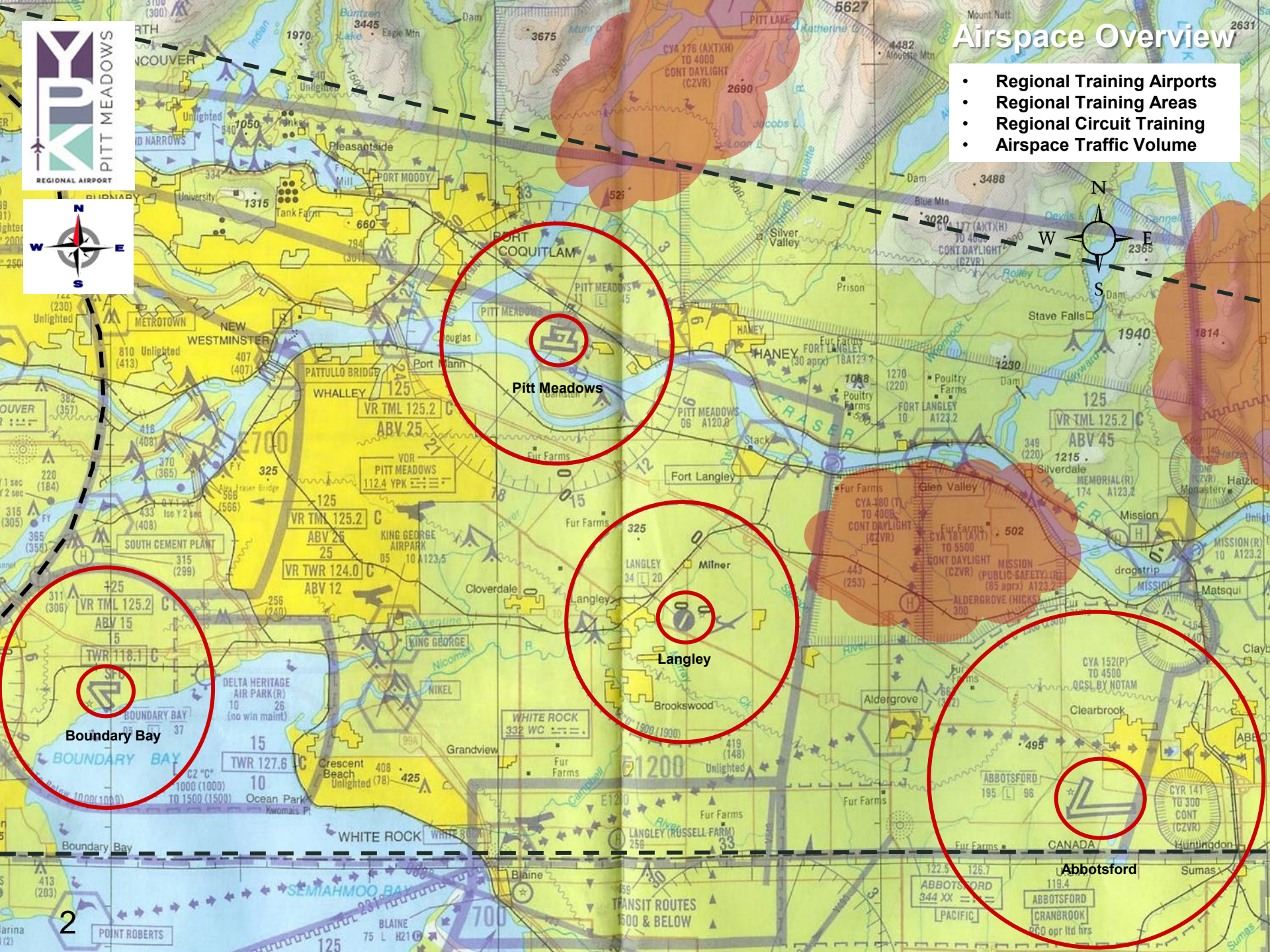


July 2020 / City of Pitt Meadows



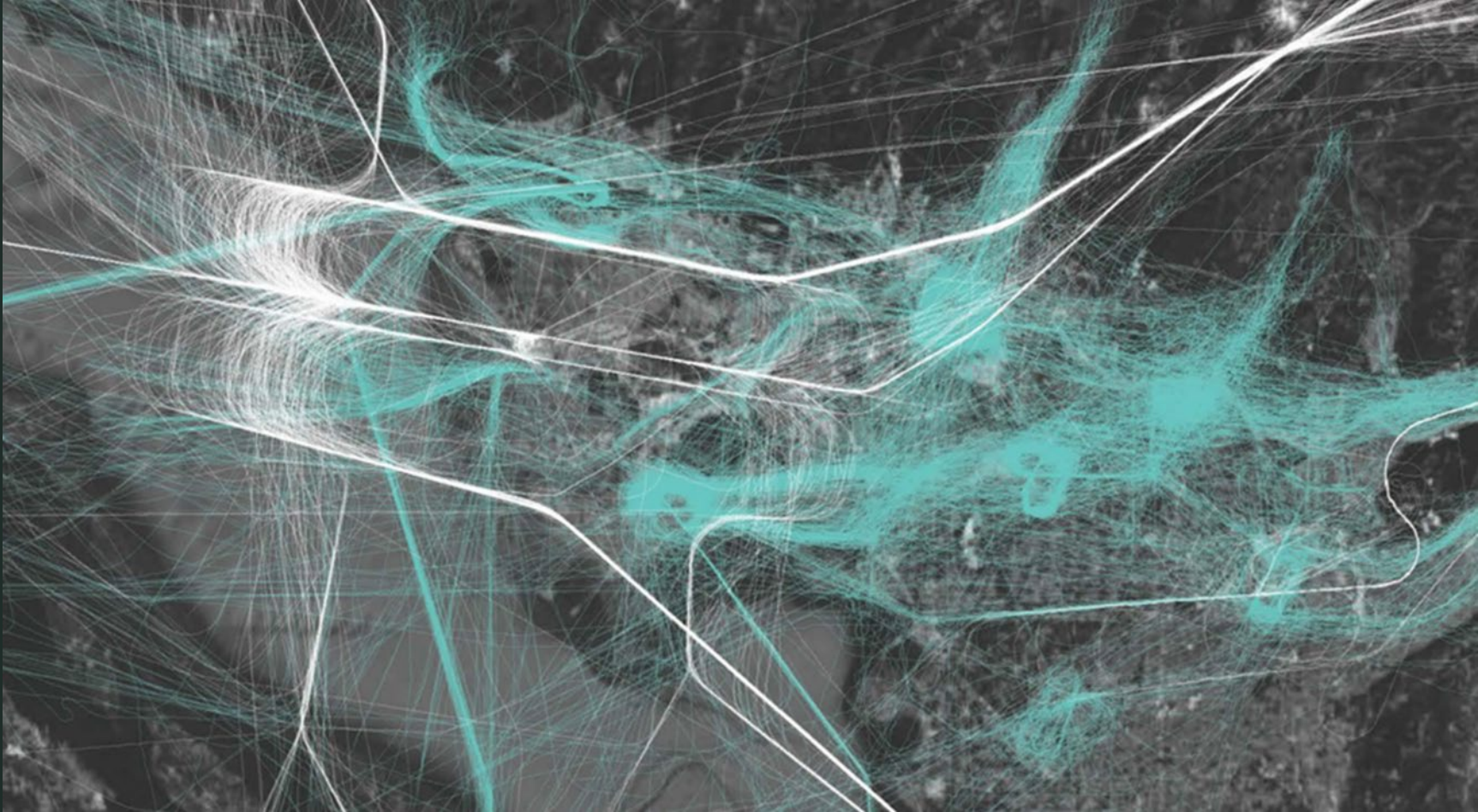
# Airspace Overview

- Regional Training Airports
- Regional Training Areas
- Regional Circuit Training
- Airspace Traffic Volume



# Airport Noise Management Overview

Pitt Meadows Regional Airport / CYPK

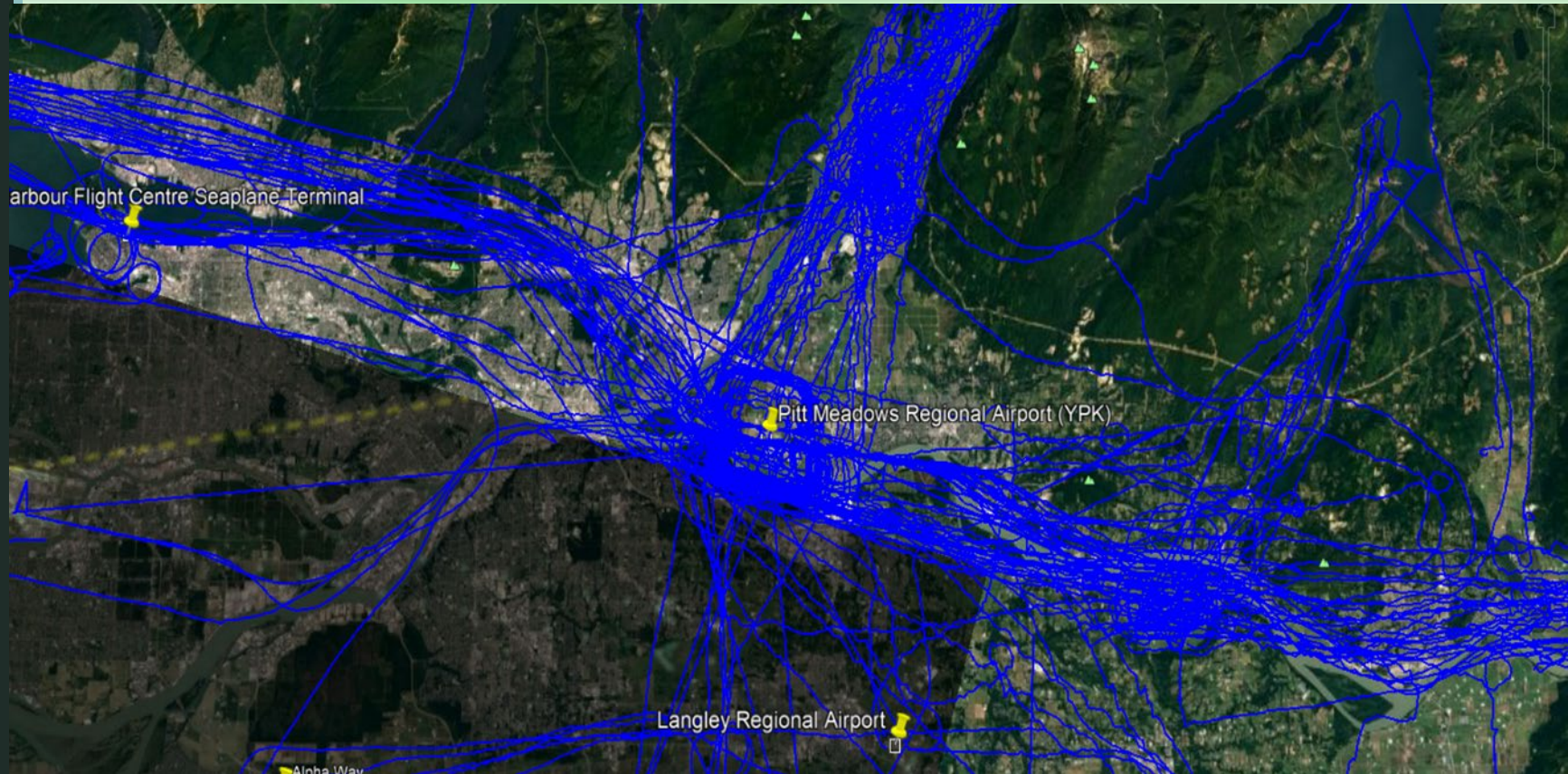


Day of arrival traffic from July 2019 over the Vancouver Lower Mainland region.

\*Information provided by NAVCAN

# Airport Noise Management Overview

Pitt Meadows Regional Airport / CYPK



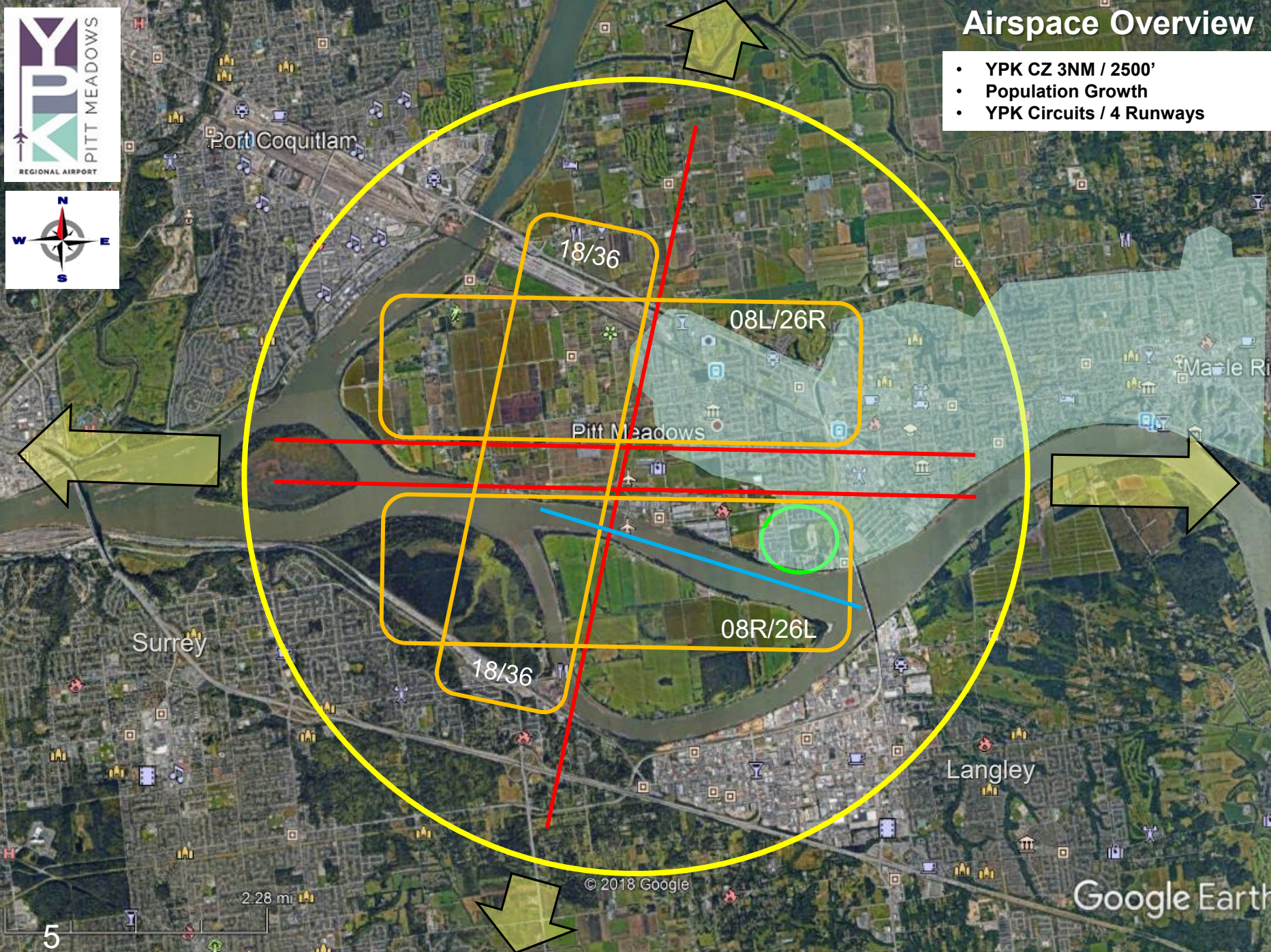
Day of flight traffic from July 2019 specific to YPK

\*Information provided by NAVCAN



# Airspace Overview

- YPK CZ 3NM / 2500'
- Population Growth
- YPK Circuits / 4 Runways



5

2.28 mi

© 2018 Google

Google Earth



# Airspace Overview

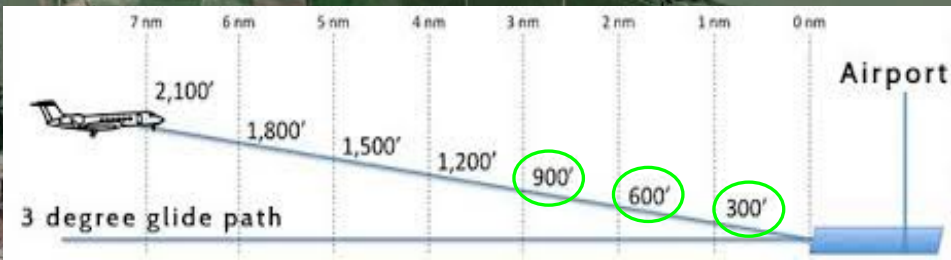
- 3 Degree Aircraft Glide Path
- Runway 26L YPK (applies to all)

Harris Rd  
5 nm / 150'

Golden Ears Way  
1.5 nm / 450'

Fraser River  
2.5 nm / 750'

Bonson Rd  
1.0 nm / 300'



# Aircraft Types

Pitt Meadows Airport / CYPK



# Airport Noise Management Overview

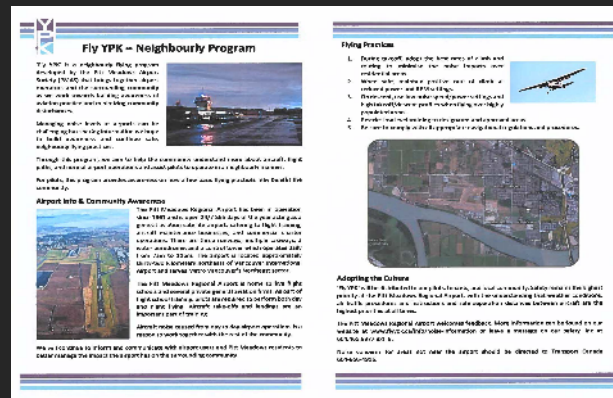
Pitt Meadows Regional Airport / CYPK





### YPK Noise Management Input comes from:

- TC – CDN Air Regulations
- NAVCAN – Operational Directives, ATC Procedures, Real Time Aircraft Command and Control
- Airport – CFS Procedures / Restrictions
- Tenants / Pilots - Best Flying Practices (Airport Culture)
- Public Noise Concerns / Reporting
  - Airport Meetings
  - Airport Website: [flyypk.ca](http://flyypk.ca) (Noise Reports)
  - Airport Email: [info@flyypk.ca](mailto:info@flyypk.ca)
  - Airport Phone: 604.465.8977
  - PM / MR City Halls
  - Transport Canada
    - Hotline: 1-800-305-2059
    - TC Email: [services@tc.gc.ca](mailto:services@tc.gc.ca)
- Airport Response / Investigate – Evaluate - Respond





# YPK Statistics

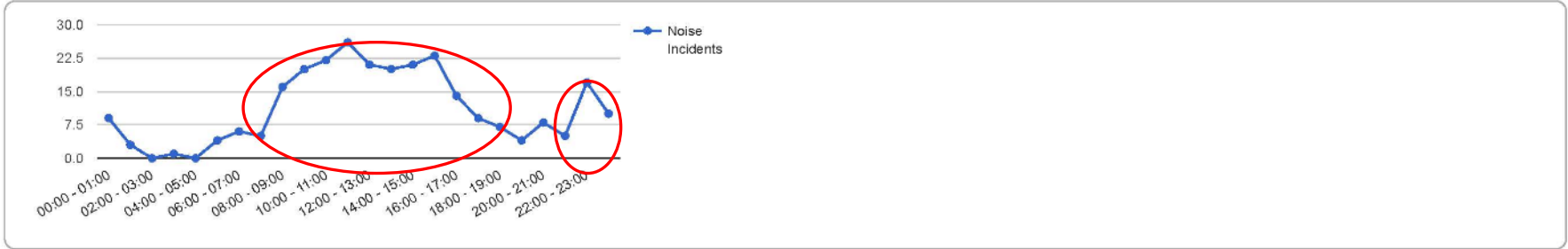
## NOISE INCIDENTS REPORT

Total incidents by hour, grouped by problem, noise source and area

DATE RANGE: Jan 1, 2015 - Dec 31, 2019

INCIDENT RANGE: All AREAS: All PROBLEMS: All NOISE SOURCE: All

2019 Movements – 144,251



Hour	Incidents	Contacts	Problem							Noise Source										Area					
			Approach	Circling	Excessive Noise	Flight Path	Frequency	Late Night Disturbance	Too Low / Too Loud	Bird Cannons	Circuit Training	Commercial Aircraft	Construction	Gliders	Ground Operations	Helicopters	Other	Private Aircraft	Skydivers	Coquitlam	Langley	Maple Ridge	Mission	Other	Pitt Meadows
00:00 - 01:00	9	8	1	1	1			4	1	1					1	5	1				2			6	
01:00 - 02:00	3	3			2			1								3								3	
02:00 - 03:00																									
03:00 - 04:00	1	1					1								1						1				
04:00 - 05:00																									
05:00 - 06:00	4	4	1			1			2				1		1	2		1						3	
06:00 - 07:00	6	6			2				4	1						3			1				3	1	1
07:00 - 08:00	5	5			2		1		2	2					1	2					1			4	
08:00 - 09:00	16	14		4	4				8	2					2	6	6				2			14	
09:00 - 10:00	20	18	1		6	5	2		6	2			4		4	3	6		2		1	1		16	
10:00 - 11:00	22	19		8	3	2		3	6	6			2		5	8	1				1		1	20	
11:00 - 12:00	26	19		7	4	2	4	1	8	4			1		9	8	2		1		3	1	1	20	
12:00 - 13:00	21	15	1	4	6	2			8	2	1				5	5	3		1		3	1	1	15	
13:00 - 14:00	20	17		1	5	1	1		12	9			3		2	5	1				1	2		17	
14:00 - 15:00	21	17		2	6	3	1		9	9					6	5					1			19	1
15:00 - 16:00	23	18		4	4	1	1		13	5					6	3	5		2		5		1	14	1
16:00 - 17:00	14	9		2	2	5	1		4				4		3	1	3				2			12	
17:00 - 18:00	9	8			2	1	2		4	1			1		4	3						1		8	
18:00 - 19:00	7	7		1	1	2			3	1			2		1	3					4			3	
19:00 - 20:00	4	3		1					3						2									4	
20:00 - 21:00	8	7		1	1	2	2		2	3							3							8	
21:00 - 22:00	5	5		1	2			2	4						1									5	
22:00 - 23:00	17	17		7	2		2	4	2	13						1	2							16	
23:00 - 00:00	10	10		3	1		1	4	1	5					3	2							1	8	
<b>Total</b>	<b>271</b>	<b>230</b>	<b>4</b>	<b>47</b>	<b>56</b>	<b>27</b>	<b>19</b>	<b>19</b>	<b>98</b>	<b>70</b>	<b>1</b>		<b>19</b>		<b>52</b>	<b>67</b>	<b>40</b>		<b>7</b>	<b>2</b>	<b>28</b>	<b>6</b>	<b>8</b>	<b>216</b>	<b>3</b>

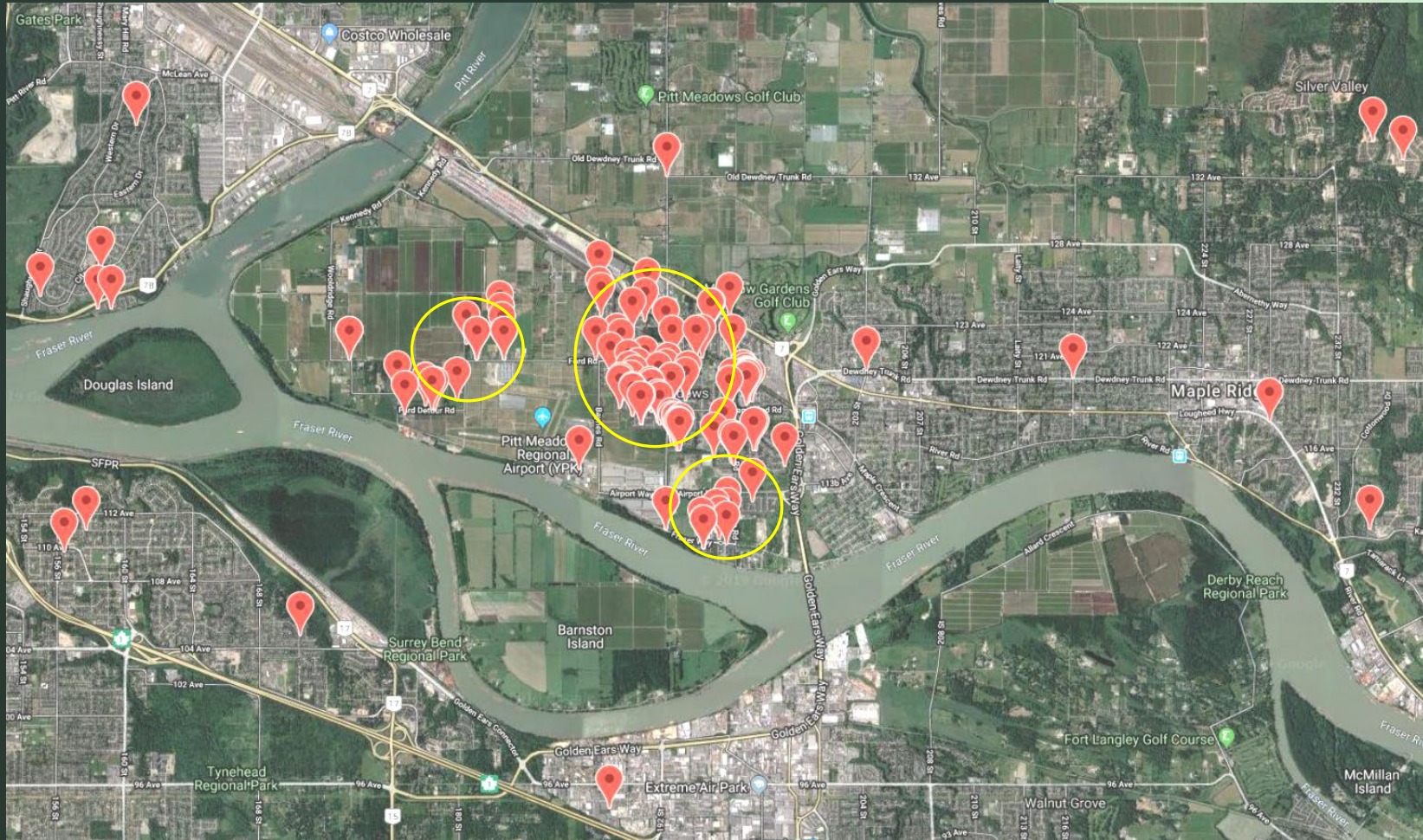
Printed Jan 8, 2020

PM Approx. 91 - 4 Persons / 125 - 96 Persons  
MR Approx. 28 - 19 Persons

After gathering community input, grievances, concerns, and recommendations by various means (public meetings / email / phone / website / noise reports), the PMAS Board instructed the Airport Manager to work with NAVCAN & TC (subject matter experts) to establish enhanced noise mitigation procedures for YPK.

# Airport Noise Management Overview

## Pitt Meadows Regional Airport / CYPK

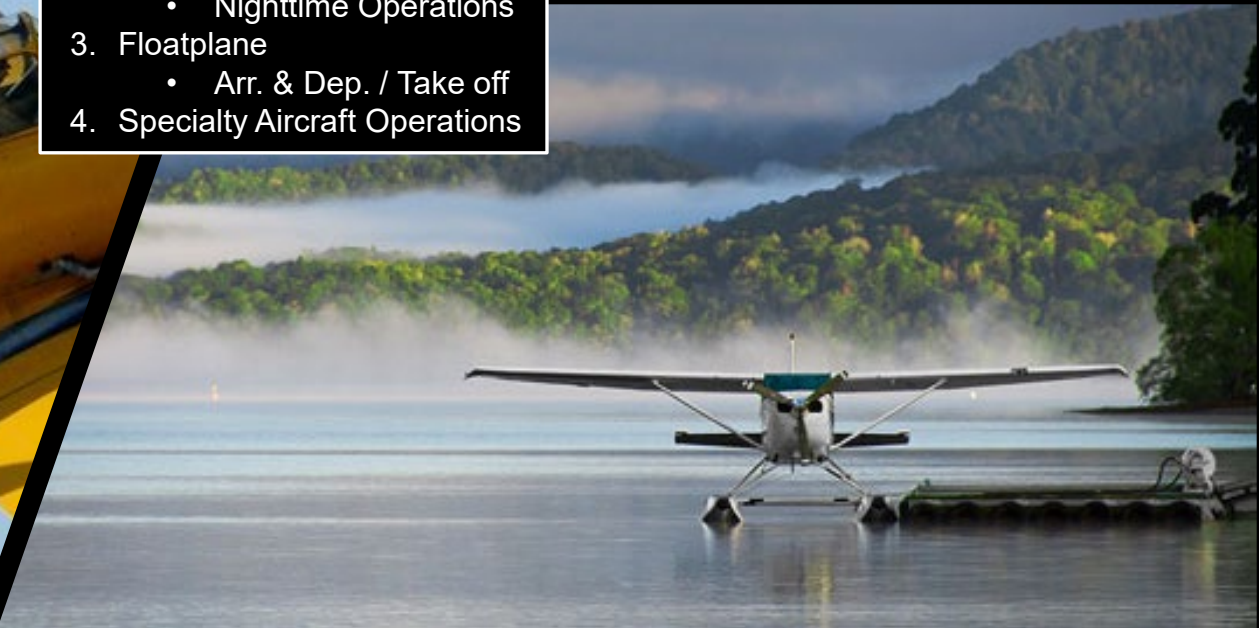


Graphic Depiction



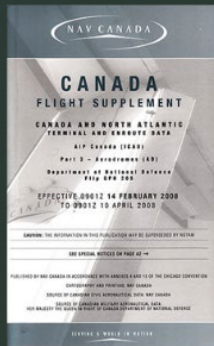
### High Level Trends

1. Rotary Wing
  - Arr. & Dep. / Circuits
2. Fixed Wing
  - Training Circuits
  - Nighttime Operations
3. Floatplane
  - Arr. & Dep. / Take off
4. Specialty Aircraft Operations



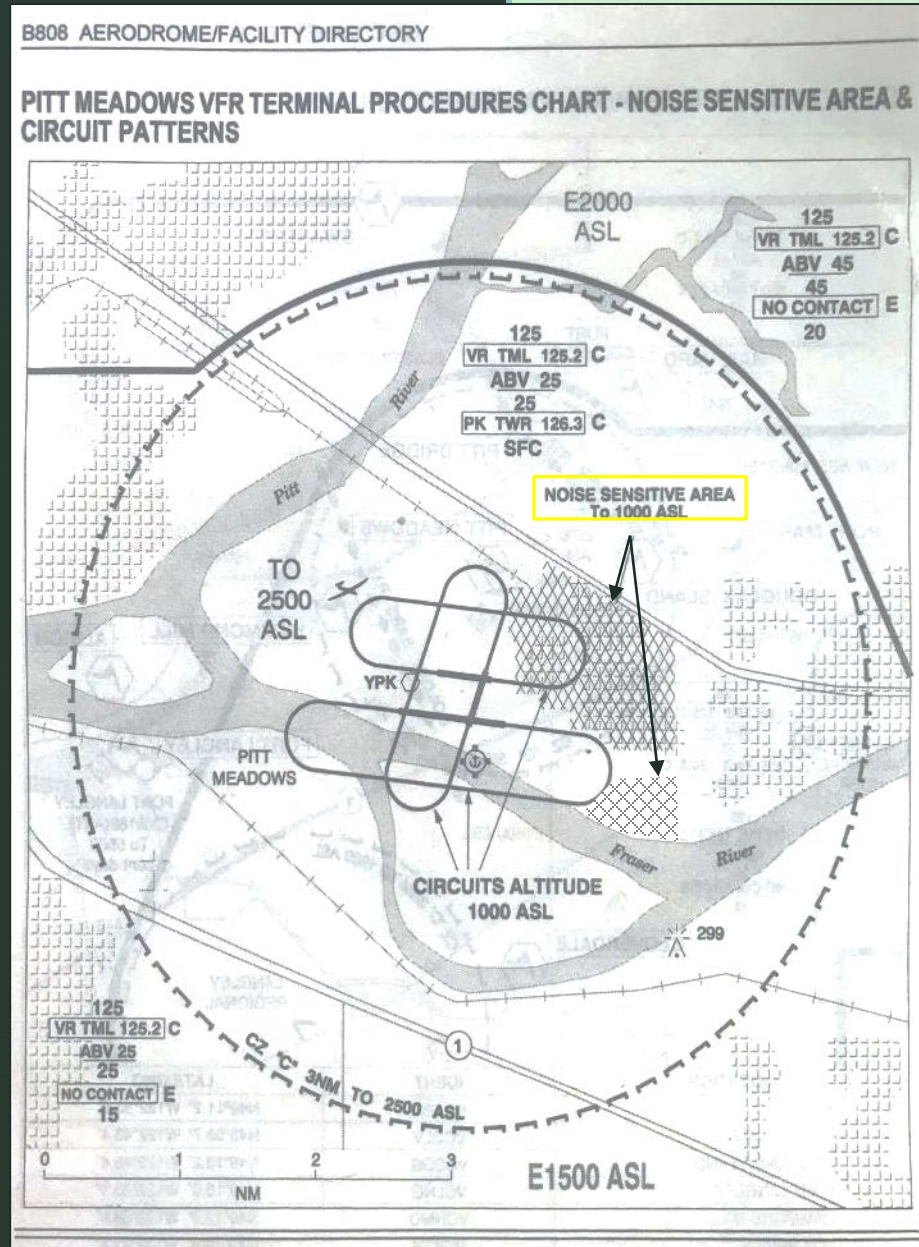
# Airport Noise Management Overview

Pitt Meadows Airport / CYPK



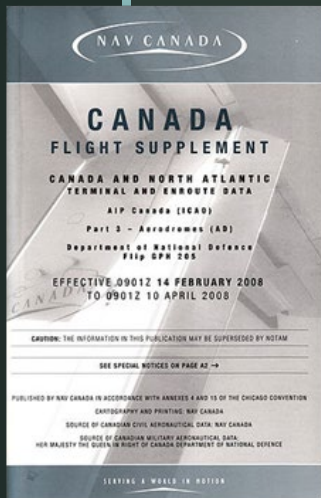
## General Comments - Process

1. Community Input: (Public Meetings / Email / Phone / Website / SMS Noise Reports)
2. Collaborative engagement with TC / NAVCAN / Commercial & GA Tenants (subject matter experts)
3. Noise Mitigation Recommendations
4. CFS Additions / YPK Noise Sensitive Images & YPK Noise Control Procedures Text
5. The CFS is not a legal document. Noise Control Procedures are recommendations only. Transport Canada accepts that pilots may deviate if needed to do so for operational / safety requirements.
6. ATC will support the noise control initiatives at YPK by avoiding issuing instructions causing unnecessary flights over Noise Sensitive Areas whenever possible as depicted in the CFS.



# Airport Noise Management Overview

Pitt Meadows Airport / CYPK



## General Comments – Rotary Wing

1. Meetings - helicopter companies/operators at YPK.
2. Avoid Noise Sensitive areas to all extent practicable.
3. ATC is not planning on any newly published helicopter flight routes at this time.
4. Creation of a local in-house ATC accepted helicopter routing situated over the Fraser River has been established. Sky Helicopters / Heli-products / Premiere Helicopters / Sierra Helicopters all in agreement.
  - Pitt River Route / South Shoreline when practicable.
  - Golden Ears Route / South Shoreline when practicable.
5. CFS – Turbine Helicopter Circuit Restrictions

## General Comments - Fixed Wing

1. Avoid Noise Sensitive areas to all extent practicable.
2. CFS - Nightfall & When Tower Closed Flight Requirements / Restrictions

## General Comments - Floatplane

1. Meetings - floatplane companies/operators at YPK.
2. Avoid Noise Sensitive areas to all extent practicable.
3. CFS - T/O & Circuit Requirements

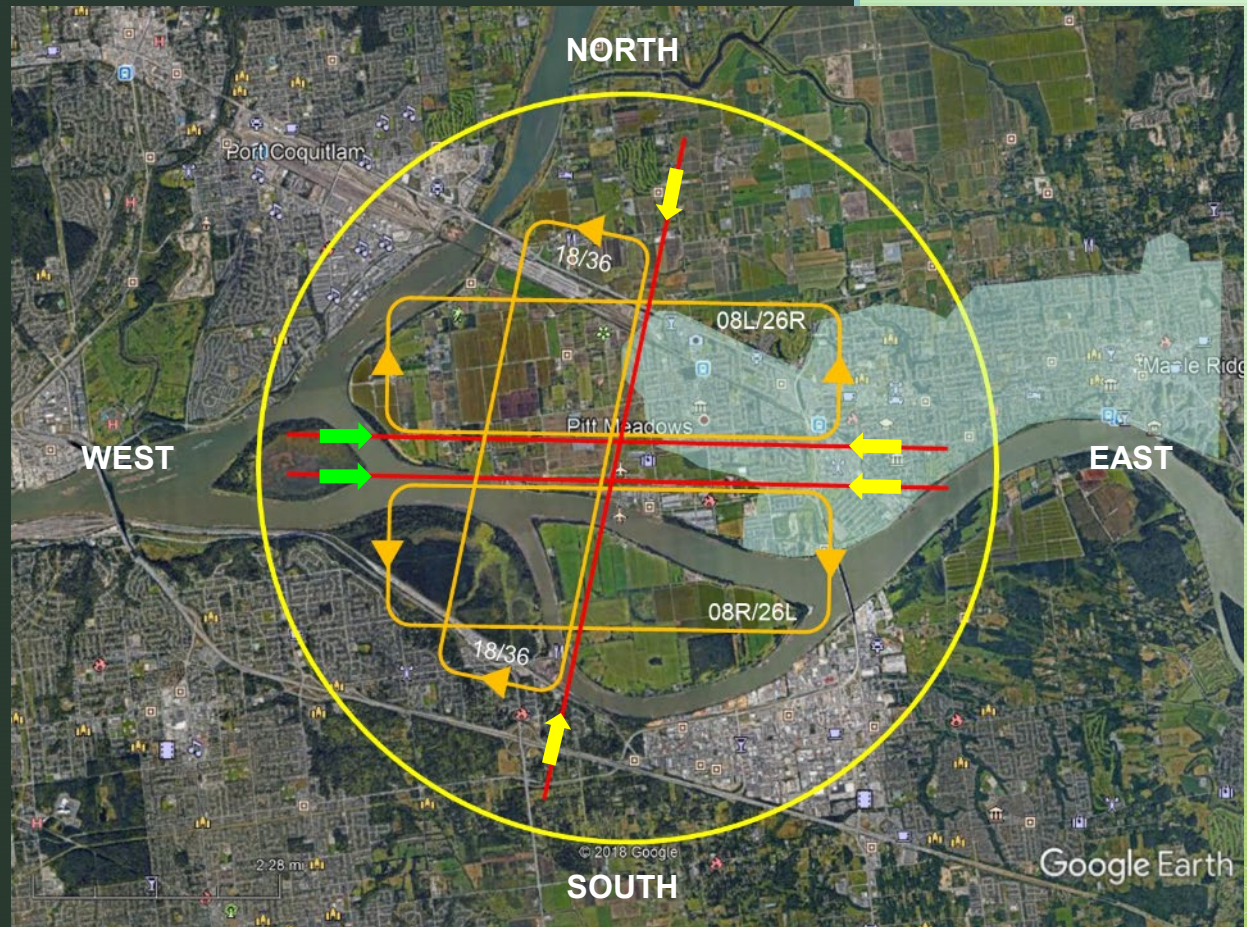
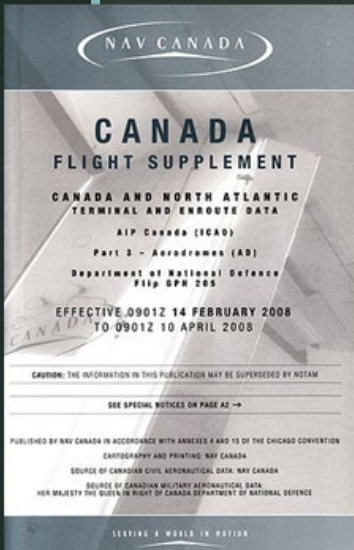
## May Edition – CFS / Specifics

# Airport Noise Management Procedures

Text changes to Pitt Meadows Airport / CYPK  
Canada Flight Supplement (CFS) - Noise Text

## Night Restrictions:

1. Circuit training Rwy 26L, 26R, 18, 36 (yellow) not authorized from 06-15Z (10-7) unless approved by APM.
2. Circuit training Rwy 08R / 08L (green) not authorized from 05-15Z (9-7) unless approved by APM.
3. Turbo-jet, turbo-fan and turbo-prop night circuit training PPR from APM.
4. All acft avoid overflight of noise-sensitive areas, unless unable due to crosswind limitations, operational/safety considerations, or as directed by ATC.

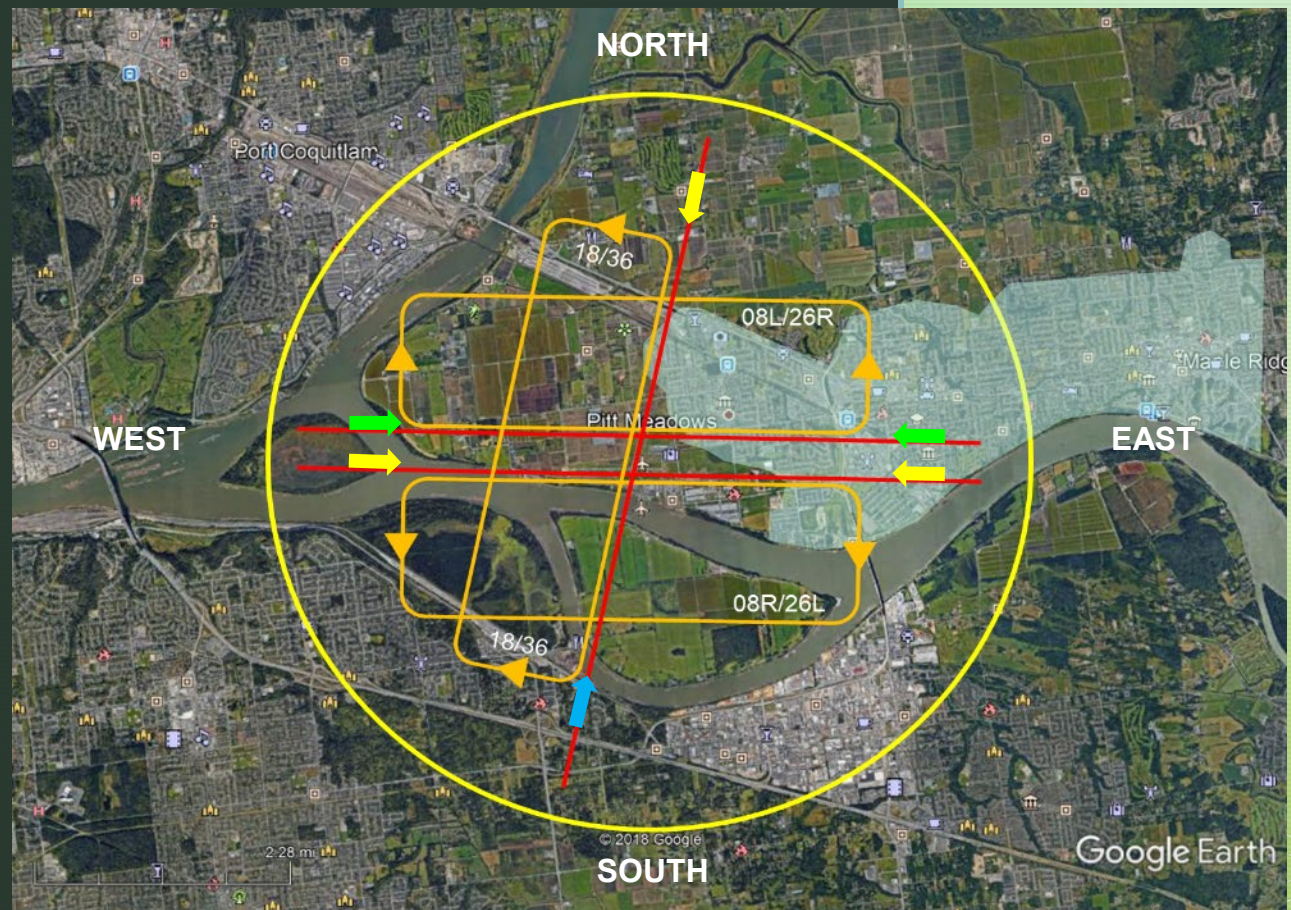
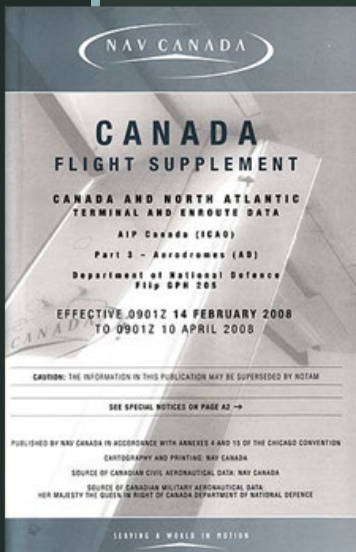


# Airport Noise Management Procedures

Text changes to Pitt Meadows Airport / CYPK  
Canada Flight Supplement (CFS) - Noise Text

## When Tower Closed:

1. Rwy 26L/08R/18 Dep (yellow): Acft climb Rwy hdg to 1000 feet ASL BPOC. Best Rate of Climb. Avoid flight over built-up areas in downwind and crosswind legs.
2. Rwy 36 Dep (blue): Left hand circuit. When safe turn left to 1000 feet ASL BPOC. Best Rate of Climb. Avoid flight over built-up areas in downwind and crosswind legs.
3. Rwy 26R/08L (green) not to be used when twr is closed unless rqrd due to operational/safety considerations.
4. Arrivals / Departures avoid low flight over built-up areas, unless directed by ATC.





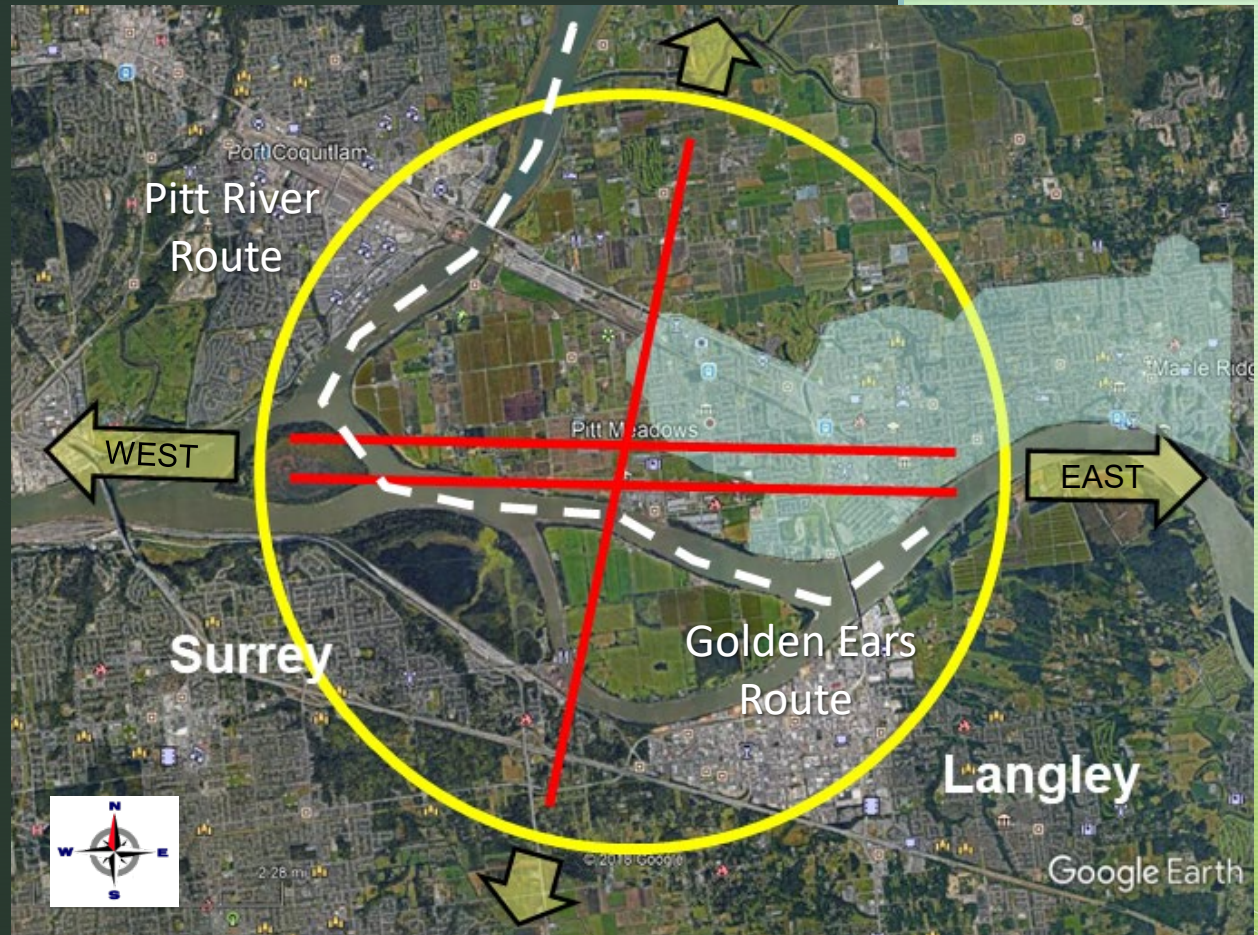
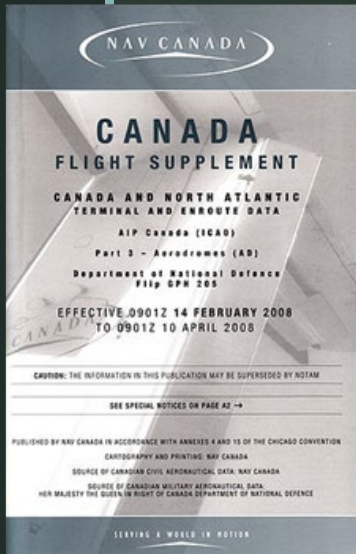
# Airport Noise Management Procedures

Text changes to Pitt Meadows Airport / CYPK

Canada Flight Supplement (CFS) - Noise Text

## HELI:

1. All Turbine Heli: Continuous circuits prohibited unless approved by APM.
2. Arrivals/departures: Avoid low flight over built-up areas, unless directed by ATC.
3. Company Routes / In House

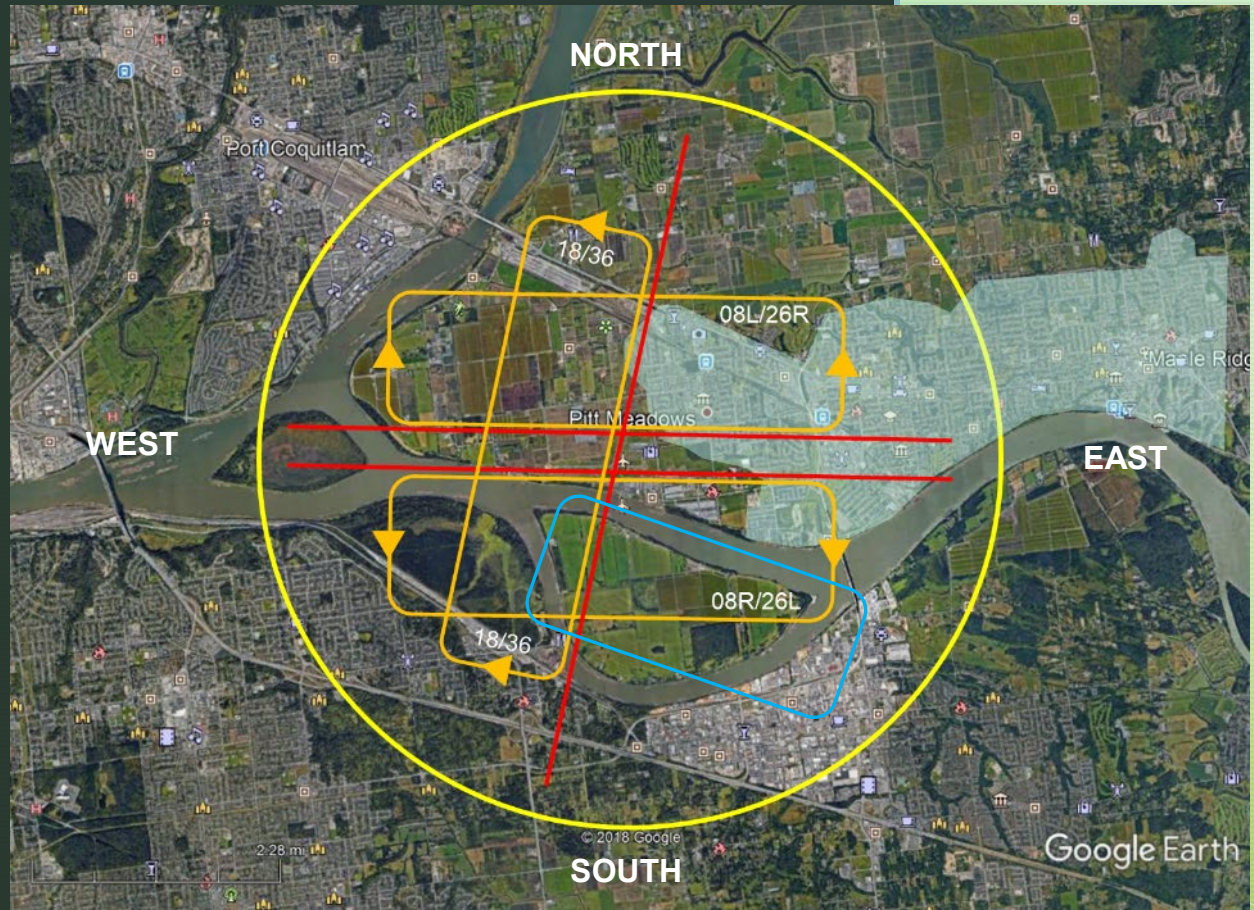
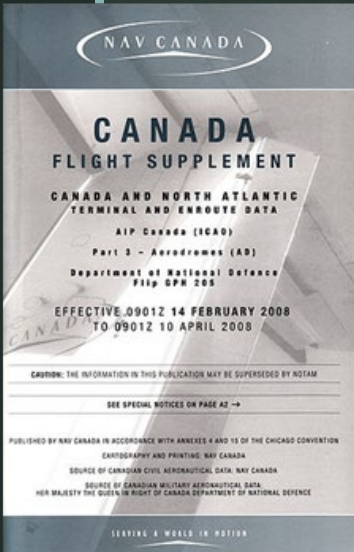


# Airport Noise Management Procedures

Text changes to Pitt Meadows Airport / CYPK  
Canada Flight Supplement (CFS) - Noise Text

## YPK Water Supplement:

1. Arrivals / departures: Avoid low flight over built-up areas, or as directed by ATC.
2. East bound dept on Fraser River initiate takeoff West of Float Plane Ramp or as directed by ATC.
3. Circuits 500' ASL to the South side of Fraser River.



# Airport Noise Management Procedures

Text changes to Pitt Meadows Airport / CYPK

Canada Flight Supplement (CFS) - Noise Text

PITT MEADOWS BC (Cont'd)		CYPK
LIGHTING	08R-AO(TE ME)P2, 26L-AO(T ME)P2, 18-(TE ME), 36-(TE ME), 06-14Z± O/T ARCAL-126.3 key mic 3 times within 5 sec for 26L, & 5 times within 5 sec for 08R & 7 times within 5 sec for 18-36 for 15 min duration lgt.	
COMM	ATIS 125.0 1-877-517-2847 15-07Z± GND 123.8 15-07Z± TWR Pitt 126.3 (V) 15-07Z± (emerg only 604-465-9723) MF tfc 126.3 07-15Z± 3NM 2500 ASL (CAR 602.98)	
NAV	VOR YPK 112.4 N49 12 57 W122 42 54 (44')	
PRO	<p>Rgt hand circuits Rwy 08R, 18 &amp; 26R (CAR 602.96) circuit hgt 1000 ASL. Seaplane circuits 500 ASL on S side of Fraser River. Procedures for crossing the southern Strait of Georgia within Tml Class C airspace refer to Vancouver Intl, VTPC for Crossing the Southern Strait of Georgia.</p> <p><b>ATS REQUIREMENTS:</b>            All VFR acft arriving, departing or transiting the Vancouver or Victoria Tower Class C or D airspace require a transponder code.            - All acft departing Vancouver or Victoria Intl (including Water Aerodrome) call Kamloops FIC at 866-541-4101 or PAC RDO 122.5 or 123.15 for code assignment at least 30 min prior to flight or file a VFR Flight Plan/Flight Itinerary.            - All acft arriving Vancouver Intl (including Water Aerodrome) or transiting Vancouver or Victoria Control Zones obtain a code from one of the following ATS units: Vancouver Harbour, Nanaimo, Victoria Harbour, Boundary Bay, Langley, Abbotsford or Pitt Meadows, or call Kamloops FIC at 866-541-4101 or PAC RDO 122.5 or 123.15.            - All acft arriving Victoria Intl from a non NAV CANADA site call Kamloops FIC at 866-541-4101 or PAC RDO 122.5 or 123.15 for code assignment at least 30 minutes prior to flight or file a VFR Flight Plan/Flight Itinerary.</p> <p><b>NIGHT RESTRICTIONS:</b>            - Circuit tng Rwy 08R &amp; 08L not auth 05-15Z± PPR.            - Circuit tng Rwy 26L, 26R, 18/36 not auth 06-15Z± PPR.            - Turbojet, turbofan and turboprop night circuit tng PPR.            - All acft avoid overflight of noise-sensitive areas, unless unable due to crosswind limitations, operational/safety considerations, or as directed by ATC.  <u>When Tower Closed:</u>            - Rwy 08R/18/26L Dep: Acft climb rwy hdg to 1000 ASL BPOC. Best Rate of Climb. Avoid ft over built-up areas in downwind and crosswind legs.            - Rwy 36 Dep: Left hand circuit. When safe turn left to 1000 ASL BPOC. Best Rate of Climb. Avoid ft over built-up areas in downwind and crosswind legs.            - Rwy 08L/26R not to be used when twr is clsd unless rqrd due to operational/safety considerations.</p> <p><b>HELI:</b>            All Turbine Heli: Continuous circuits prohibited unless approved by APM.            - Arr/dep: Avoid low ft over built-up areas, unless directed by ATC.</p>	
CAUTION	Coyotes in vic of rwy's. 160' lit crane 2NM NW of A/D. Quarry blasting ops within 0.6NM radius N49 17 14 W122 39 33 (aprx 4.7NM N of A/D) to 300 AGL.	



## Noise Management Going Forward

### Continue to work with:

- On Airport Tenants - Awareness & Desired Output (Commercial & Private)
- Off Airport Users - Awareness & Desired Output (Commercial & Private)
- Community Members - Awareness & Continued Input (Monitor / Investigate & Evaluate / Respond)

### Continue to:

- Monitor & Evaluate Current Noise Mitigation Procedures for continued Safety, Effectiveness, and Relevancy both annually & as required.  
Emphasis on:
  - a) Nighttime Operations
  - b) Fixed Wing Circuit (Day / Night)
  - c) Flight School / Helicopter Operations (Day / Night)
  - d) Specialty Aircraft / Floatplane Operations (Day / Night)
- Manage Airport Capacity
- Work with the City & TC / Land Use Planning & Zoning





July 2020 / City of Pitt Meadows

